



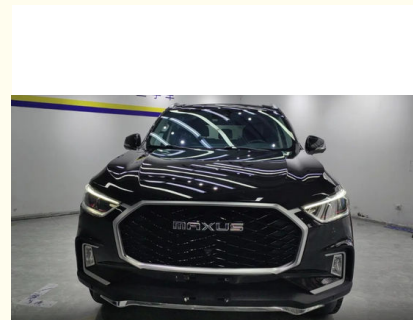
## SAIC Maxus D90 2017 2.0T Automatic 4WD Polestar Medium And Large SUV Gasoline 2.0T 224HP L4 6-speed Manual

Our Product Introduction

for more products please visit us on petrolhybridcars.com

### Basic Information

- Place of Origin: China
- Brand Name: Maxus D90
- Model Number: Maxus D90
- Minimum Order Quantity: discussible
- Delivery Time: 5-8 word days
- Payment Terms: T/T

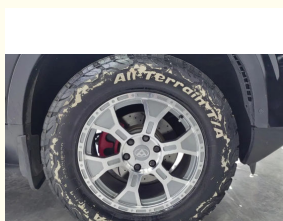
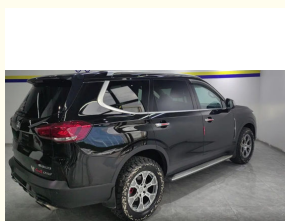


### Product Specification

- Energy Type: Gas
- Maximum Power: 165(224Ps)
- Length \* Width \* Height: 5005x1932x1875
- Product Category: SUV
- Body Structure: 5 Door 7 Seat Suv
- Drive Model: Front Four Wheel Drive
- Highlight: **SAIC Maxus D90 2017 2.0T, 4WD Polestar Medium And Large SUV, Automatic 2.0T SAIC Maxus D90**



### More Images



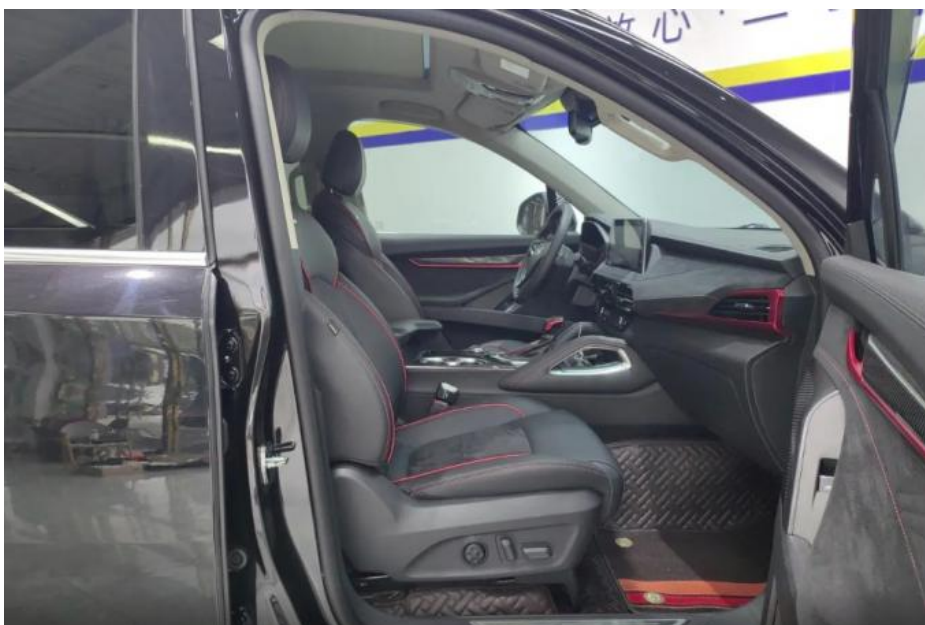
### Product Description:

#### Used Maxus D90

The Maxus D90 is a full-sized SUV that seamlessly blends rugged capability with modern luxury. Built by SAIC Motor, the D90 is designed to cater to those who seek adventure without compromising on comfort and technology. This versatile vehicle is powered by a robust 2.0L turbocharged engine, offering ample power and torque for both city driving and off-road escapades. Its dynamic performance is complemented by a smooth 6-speed automatic transmission and available four-wheel-drive system, making it an ideal companion for a wide range of terrains and driving conditions.

The D90 stands out with its bold and commanding presence, featuring a distinctive front grille, LED headlights, and a muscular body design that exudes strength and confidence. The spacious interior of the D90 is designed with both driver and passenger comfort in mind, offering a well-appointed cabin that can comfortably seat up to seven adults. Premium materials, advanced technology, and thoughtful touches like multi-zone climate control and a panoramic sunroof enhance the overall driving experience.

Technologically, the Maxus D90 is equipped with a state-of-the-art infotainment system, featuring a large touchscreen interface, smartphone integration, and a comprehensive suite of driver-assistance features. These include adaptive cruise control, lane-keeping assist, and a 360-degree camera system, ensuring both safety and convenience on every journey. Whether you're navigating urban streets or exploring rugged landscapes, the Maxus D90 offers a perfect balance of performance, comfort, and technology. It's a vehicle that meets the demands of modern drivers who value versatility, making it a top choice in the competitive SUV market.





## Features:

Product Name: Used Maxus D90

Safety:

Comprehensive safety airbag system for passenger protection

Advanced safety technologies including ABS (Anti-lock Braking System), Electronic Stability Control, etc., for stable driving and braking performance

Technical Parameters:

Maximum Speed:	175
Length* Width* Height:	5005x1932x1875
Engine	L4
Energy Type:	gas
Body Structure:	5 Door 7 Seat Suv
Maximum Torque:	360
Power train:	gas
Exterior Design:	The interior design is exquisite and practical, using high-quality materials and comfortable to the touch. The seats are ergonomic and provide excellent support and ride comfort. The interior is richly equipped with features such as a large center screen and an intelligent connectivity system to make your drive more convenient and enjoyable.
Product Name:	Maxus D90

Applications:

The stylish and dynamic appearance and smooth lines outline a charming figure, making you the focus of the street.  
The interior space is spacious and comfortable, flexible and changeable to meet your diverse needs.  
Efficient power, economical and fuel-efficient, saving costs for your travel.  
Rich and practical configurations, enjoy a convenient driving experience.  
Excellent safety performance, escorting every trip for you.

Support and Services:

- 24/7 technical support hotline for any questions or concerns
- On-site technical support for major issues
- Regular software updates to improve performance and add new features
- Access to Toyota's network of certified service centers for maintenance and repairs
- Warranty coverage for the vehicle and battery

Our technical support and services team is dedicated to providing prompt and effective solutions to any issues that customers may encounter. We strive to make sure that our customers have a worry-free ownership experience with their Car.

Packing and Shipping:

Product Packaging:  
Used Maxus D90  
Warranty Information  
User Manual  
Shipping Information:

Product will be shipped within 5-7 business days of order confirmation.  
Shipping fees will be calculated during checkout.  
Shipping available to most locations worldwide.  
Tracking information will be provided once the product has been shipped.

## FAQ:

**Q: What is the brand name of the car?**

A: The brand name is Maxus D90.

**Q: Where is the full electric car manufactured?**

A: The car is manufactured in China.

**Q: What is the minimum order quantity for the full electric car?**

A: The minimum order quantity is discussible. Please contact us for more information.

**Q: What are the payment terms for the full electric car?**

A: The payment terms are T/T.

**Q: What is the delivery time for the full electric car?**

A: The delivery time is 5-8 word days.



**Shaanxi Xianghelixin Automobile Sales Service Co., Ltd.**



18702965875



xunqin419@gmail.com



petrolhybridcars.com

Room 2307, Shanxi Securities Building, No.2 Gaoxin Road, Lianhu District, Xi 'an City, Shaanxi Province